



## Q&A with Reece Terris



**Linus of Artsy!Dartsy!:** We admire your installation pieces as well as your exceptional photo documentation. Could you tell our readers a little about yourself and your work?

**Reece Terris:** I work in the construction industry and am a partner of Terris-Lightfoot Contracting; a renovation and restoration firm that focuses on re-designing and reworking existing spaces both residential and commercial. Through my experience in the construction industry I have developed strong interests in the conceptual meanings of private and public space. Drawn to both architecture and visual art, I made the choice to follow a fine arts degree at Simon Fraser University. My work spans a variety of media, including sculpture, performance, installation, and photography, but all share a critical relation between objects and spaces.

**L:** Where do you draw your inspirations?

**RT:** What inspires me varies. Reading sometimes allows me an entrance into another way of thinking and I often go off on tangents daydreaming while I read. Usually an idea presents itself to me as a possible shift or adaptation within the built environment. When I am considering an idea I am typically looking at spaces or objects with a view to slightly alter or shift the given context of a space or of the objects within a space.



Above: *Bridge, City View.* Reece Terris.

**L:** Since your work blurs the notion of architecture and visual art, would you ever distinguish the two?

**RT:** I think that I would distinguish the two – in fact I think it is the separation between the two disciplines that makes what I am doing art. My work exists somewhere in the gap between the two. In my opinion (conventional) architecture is more constrained by boundaries and regulation, which is logical if you consider the end use of an architectural project – an emphasis must be placed on the functionality, durability and easy navigation of what has been constructed – a visual art project (architecturally influenced or not) is much less limited by these considerations.

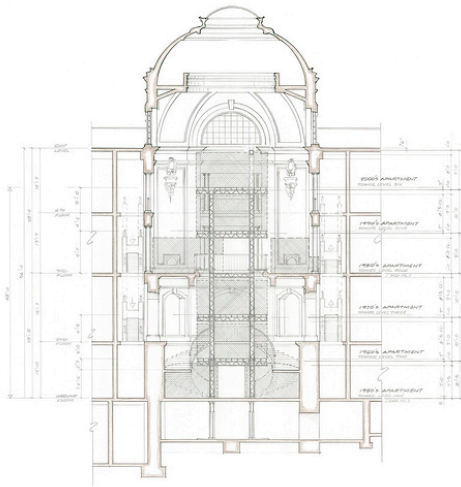
**L:** The scope of your next project at the Vancouver Art Gallery is intriguing, could you briefly explain its premise and its genesis?

**RT:** I have been commissioned by the Vancouver Art Gallery to install a six-storey apartment tower in the rotunda of the Gallery. The installation will consist of a tower with six full-scale apartments stacked one on top of another. Each apartment level will represent a decade beginning with the 1950s through to the current decade. Each floor will be fitted with materials and consumer choices of the era that I have recycled from homes and condominiums that have either been renovated or demolished. The ...exterior walls of each apartment level will be partially removed to allow views within. In keeping with the authenticity and architectural accuracy of the work, the dimensions of each apartment fluctuate so that the design at each level approximate the floor plan specific to that decade. As a result each floor reflects the dimension, layout and décor emblematic of that period's domestic living and interior design arrangements.



Photo Credit: Henri Robideau

The idea for the work evolved slowly from circumstances I typically found myself in when renovating or demolishing a home. I usually saved most of the functional items that were in good condition. All of the items I had saved were otherwise destined for the junkyard and with an ever amassing amount of reclaimed construction materials, furniture, and appliances in storage I eventually came up with the idea to propose the piece Ought Apartment to the Vancouver Art Gallery. The acceptance of my proposal has allowed me to recycle and reuse what I had saved, re-working the materials and objects into an installation in the form of an apartment tower. Initially saving the material was a-kind of corrective measure within the process of my day-to-day construction work – a way of reducing my own role in tossing everyone else's belongings into the dump. For me, the work - Ought Apartment reflects the changing nature of apartment / condominium living, and draws attention to the economy of obsolescence which often drives the process of home renovation.



**L:** Thank you for your insights Reece.

**RT:** Thank you Linus.

Above: *Ought Apartment Tower Massing Drawing*. Reece Terris